



Monica Tocchi



Connor Dowli...



Loren Busby



Jahanara Ali



Recording

Teaching Squad



Multifaceted experience in early stage technology investing, commercialization, and licensing.

Jahanara Ali, PhD

Director, BioVenture eLab



20+yrs designing clinical trials and managing market approvals for medical devices.

Monica Tocchi, MD, PhD

Founder, CMO, Meditrial



IP attorney and investor specializing in early stage life science companies.

Craig Kenesky, PhD, Esquire

Wilson Sonsini Goodrich & Rosati

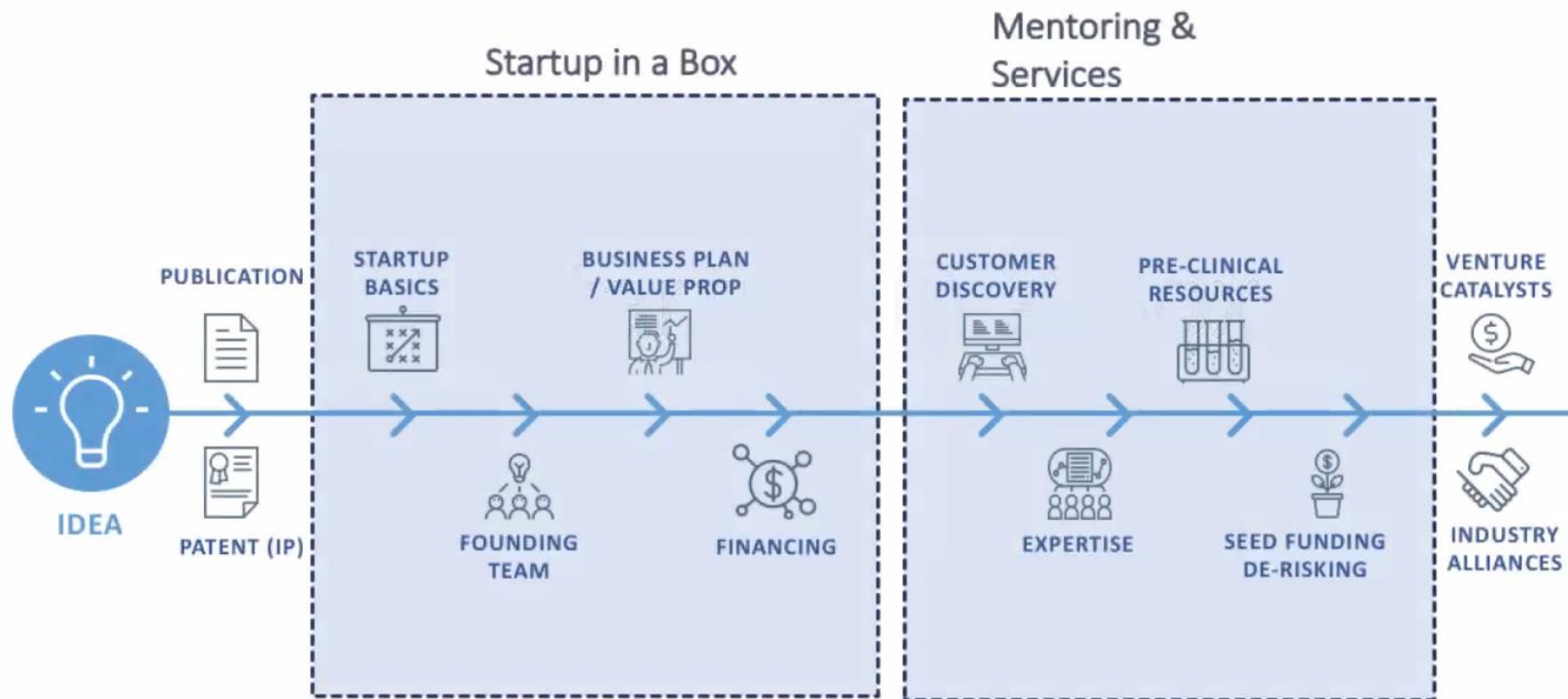


20+yr VC professional. Current CFO/COO for several NYC-based startups.

Loren A. Busby, CFA

Entrepreneur-in-Residence, BioVenture eLab

Early Stage Entrepreneurial Journey



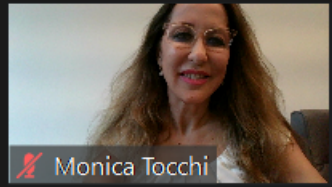
Monica Tocchi

Connor Dowling

Loren Busby

Jahanara Ali

Jeremy Weingaertner



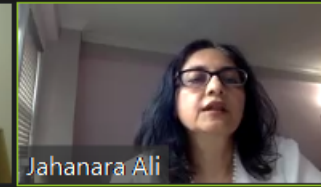
Monica Tocchi



Connor Dowli...



Loren Busby



Jahanara Ali



Recording

Overview

- Tap interest in entrepreneurship and startup formation with the intention to move onto practical applications in follow-on courses - Accelerating BioVenture Innovation (ABI) and Biomedical Business Plan Challenge (BBP)
- Increase awareness of BioVenture eLab's resources and expertise
- Make useful connections – WCM colleagues, Bioengineering at Cornell University, Digital/media technology at CornellTech
- Support Cornell's innovation culture and grow the ecosystem

Consciously NOT comprehensive!



Monica Tocchi



Connor Dowli...



Loren Busby



Jahanara Ali



Recording

Program

- 6-week virtual course (July 7-Aug 11); 1.5 hrs/week, 9 hrs total
- Synchronous online delivery using a combination of theory and real world examples
- No homework; reinforce learning outcomes at end of class
- Topics to be covered:

Week 1: Why Start a Company?

Week 2: Intellectual Property and Product Differentiation

Week 3: Regulatory Issues and Go-to-Market Strategy

Week 4: Business Plan and Business Models

Week 5: Fundraising and Investors

Week 6: Startup Business Operations

... and much more !

FASTRACK TO SUCCESS

HOW TO BUILD A REGULATORY AND CLINICAL STRATEGY



Weill Cornell Medicine
BioVenture eLab

STARTUP IN A BOX

JULY 22, 2020
h. 5.00 pm EST



**MONICA
TOCCHI**
FOUNDER &
CMO MEDITRIAL



Second to funding, navigating the regulatory process and planning clinical trials can be the most challenging aspect of running your start-up. This lecture will help you pinpoint the information you need to develop a regulatory and clinical roadmap, and proceed at fast pace with enthusiasm.

We will explore common challenges in early development, how to ensure you have the right team to get you through the finish line, and how to navigate different markets. You will learn the essential elements for success and how to apply the information to your project.